

EnSafe's engineers and modelers provide hydrology and hydraulics (H&H) studies:

- To assess existing conditions and flood risks and evaluate hydraulic controls for flood mitigation at the site and watershed level
- To design and analyze both open channel and conveyance systems
- To evaluate stormwater detention
- To determine base flood elevations

H&H analyses can be performed as a stand-alone study or to support larger civil design or stormwater projects, from 36,000- acre water sheds to sizing and replacing street storm sewer lines/manholes. EnSafe's engineers are well versed in various stormwater and modeling software packages to evaluate alternative scenarios and solutions.



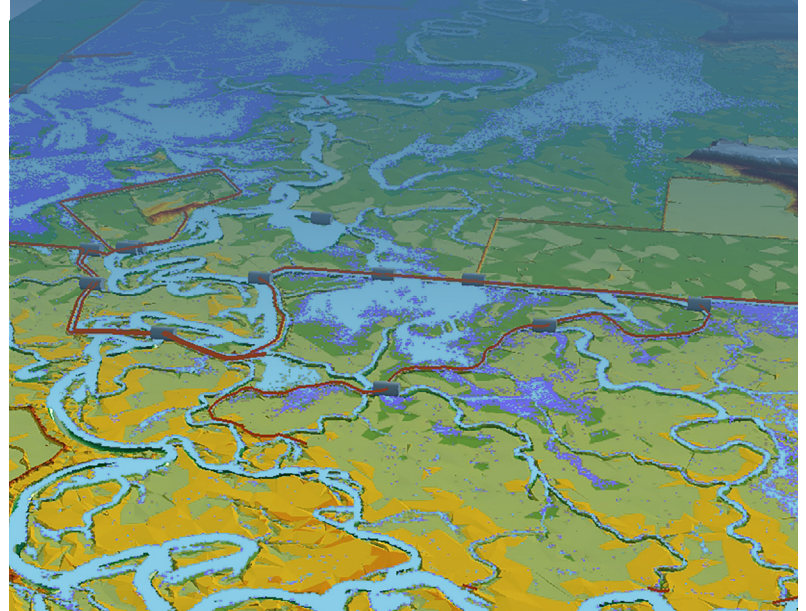
EnSafe Engineers Receive TN ACEC Award for H&H Watershed Study

EXAMPLE SERVICES

- Watershed Studies
- Floodplain Analysis
- Drainage Design
- Integrating Ecological Restoration
- Low Impact Development

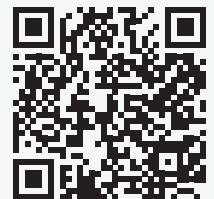
WATERSHED HYDRAULICS CASE STUDY

EnSafe developed a sophisticated 2D hydraulic model for a large watershed in Arkansas to mitigate prolonged flooding in a vast Wildlife Management Area, preserving bottomland hardwood habitat, protecting the ecosystem, and boosting tourism revenue for future generations.



Chris Triplett, PE, PMP
(901) 937-4249 | (901) 356-9187 cell
ctriplett@ensafe.com

Bridget Morello, PE
(813) 734-7985 | (813) 205-2355 cell
bmorello@ensafe.com



Scan or click the QR Code to learn more about EnSafe's Engineering services.

TEL 800.588.7962